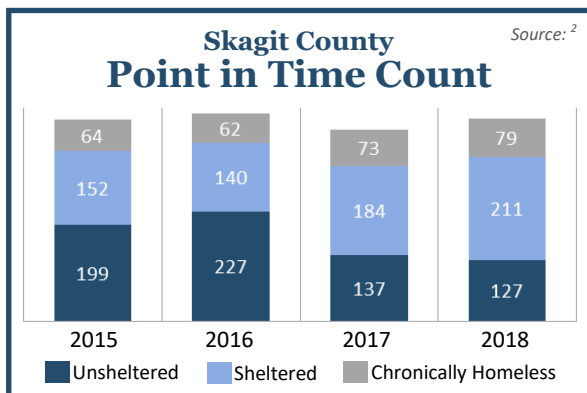
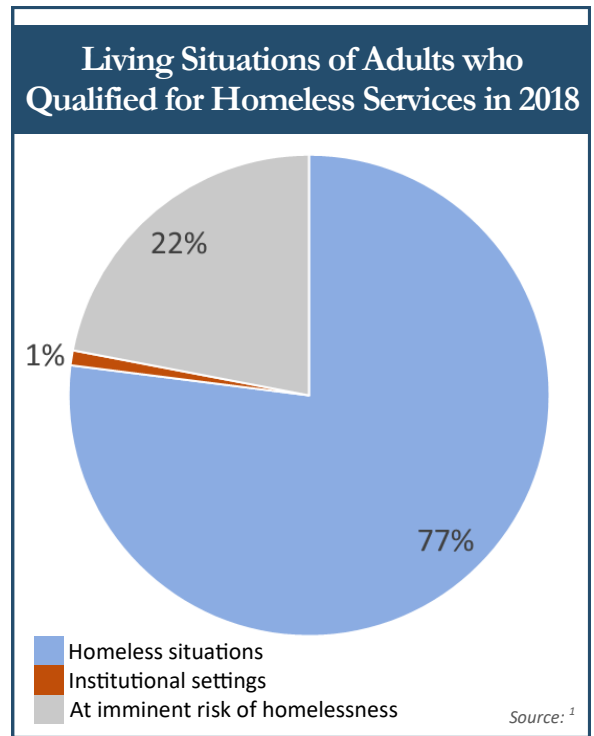
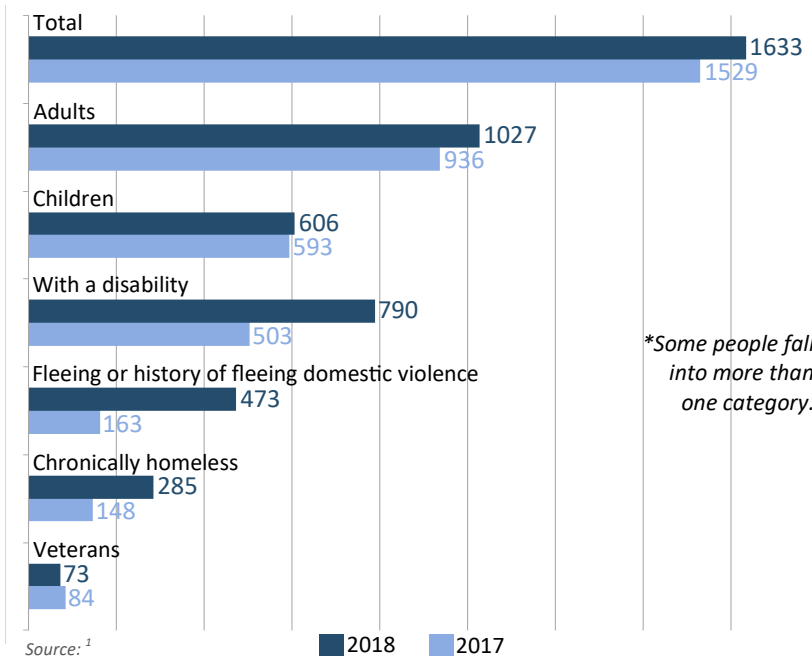




# Measuring Local Homelessness

## Who is Homeless in Skagit County?

Individuals who Sought and Qualified for Homeless Services



Mount Vernon's weather on January 25, the night recorded for the 2018 Point In Time Count

# 43°/37°

Source: Accuweather

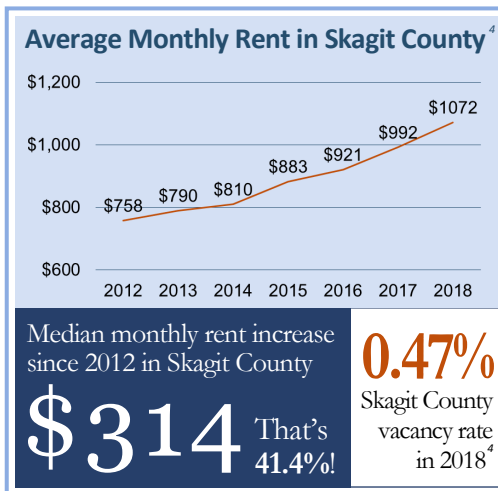
## Defining Homelessness

**Literally Homeless:** Staying in an emergency shelter, in a car, in a tent, on the streets, or a place not meant for human habitation

**Chronically Homeless:** Literally homeless more than one year OR more than three times in the last three years with the combined length of homelessness being one year or more; with a disability

**Fleeing Domestic Violence:** Without or losing housing due to domestic violence AND lacking resources to secure housing without assistance

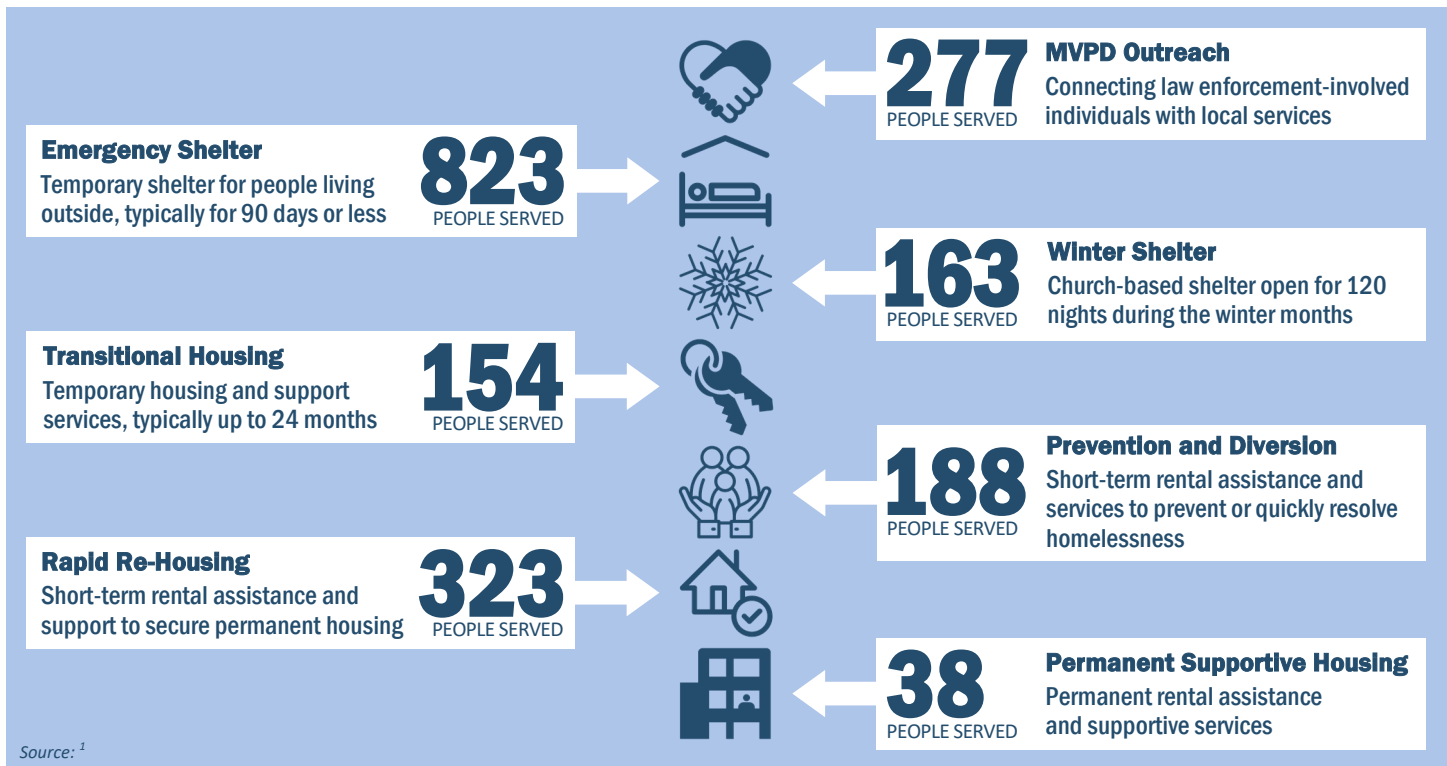
**At Imminent Risk of Homelessness:** Losing housing within 14 days AND lacking the resources to secure or maintain housing without assistance



**Did you know?**

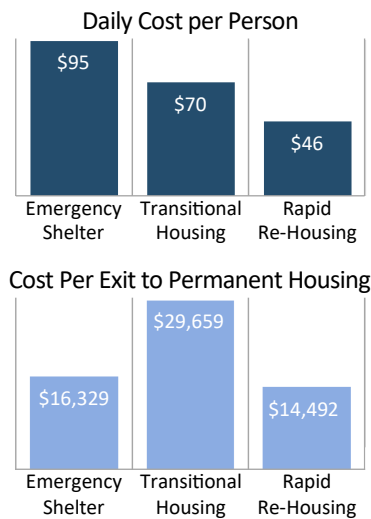
An increase of \$100 in median monthly rent can result in a 39% increase of homelessness in rural and suburban areas.<sup>3</sup>

# Measuring Local Action



Source: <sup>1</sup>

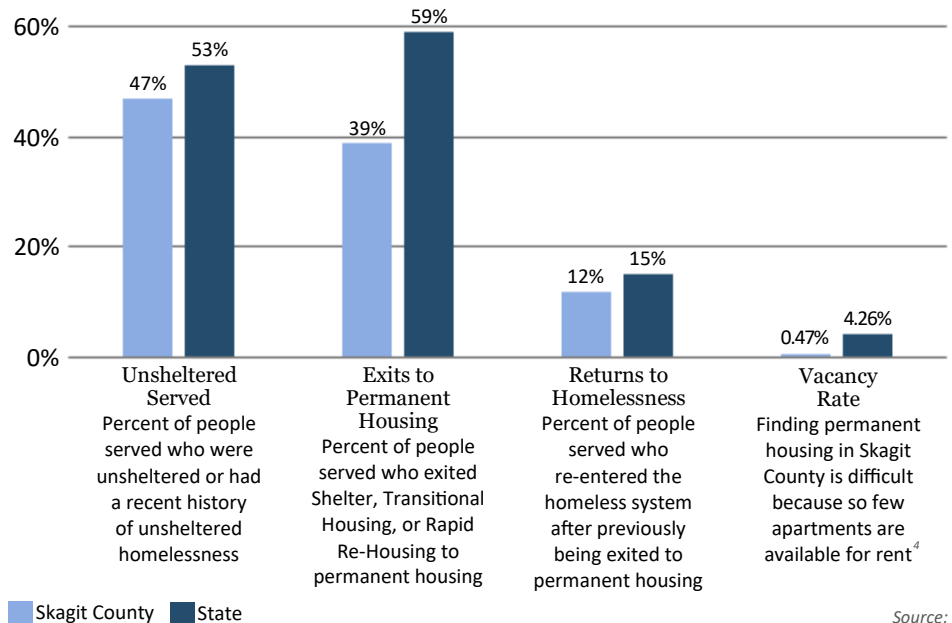
## Cost of Services in Skagit County <sup>5</sup>



## Did you know?

In Seattle, Supportive Housing saves the public more than \$30,000 each year per person housed. <sup>6</sup>

## Comparison of Skagit County and Washington State



### Sources

- <sup>1</sup> Homeless Management Information System; reporting period: 2018
- <sup>2</sup> Washington State Department of Commerce, *Point in Time Count*
- <sup>3</sup> Thomas Byrne, Ellen A. Munley, Jamison D. Fargo, Ann E. Montgomery, & Dennis P. Culhane (2013) "New Perspectives on Community-Level Determinants of Homelessness," *Journal of Urban Affairs*, 35:5
- <sup>4</sup> UW Runstad Center for Real Estate Studies (Fall 2018) "*Washington Apartment Market*"
- <sup>5</sup> Washington State Department of Commerce *County Report Card*; reporting period: State Fiscal Year 2018
- <sup>6</sup> Corporation for Supportive Housing, "*FAQs about Supportive Housing Research: Is Supportive Housing Cost Effective?*"